

Tested version since 2021 !

You get this version free for 30 days! Have any question? Visit <https://prokassa.nl/>

See below **reusable** 30 days info!

Any Feedback contact: verkoop@prokassa.nl

WinKassa.nl provides free versions of its software “as is” **and without any warranty.** WinKassa.nl **shall not be liable for any data loss, system errors, security issues, or other technical malfunctions arising from the use of any free version.** The end user is solely responsible for verifying the integrity and security of all downloaded files, including performing virus and malware scans prior to use.

WinKassa / WinRetail POS

User Manual

1. System Requirements

- WinKassa.nl Light
 - Compatible with **all Windows versions**, including **Windows 11**
-

2. Installation

1. Open the ZIP file
 2. Copy the **BircanWKL** folder to C:\
 - Example: C:\BircanWKL
 3. From C:\BircanWKL, locate **BircanWKL.exe** and:
 - Create a **desktop shortcut**, or
 - Pin it to the **taskbar**, or
 - Add it to **favorites**
-

3. Reset Sample Data (Products & Sales)

The software includes sample products and groups for demonstration purposes. You may review, use, or delete them.

[Geef tekst op]

Feedback

verkoop@proKassa.nl



To reset sample data:

1. From the admin main screen:
 - Menu **9 – Extra**
 - **3 – Data**
 - **11 – Reset Data**
2. Select **YES** when prompted
3. In the reset window:
 - Select rows **3, 4, and 5**
 - (After the first two yellow rows, select the three orange rows)
4. Click the **red triangle** on the right
5. Confirm again with **YES**

Res USE 30 days info!

The data will be successfully deleted. Then restart the software for the 30-day free trial.

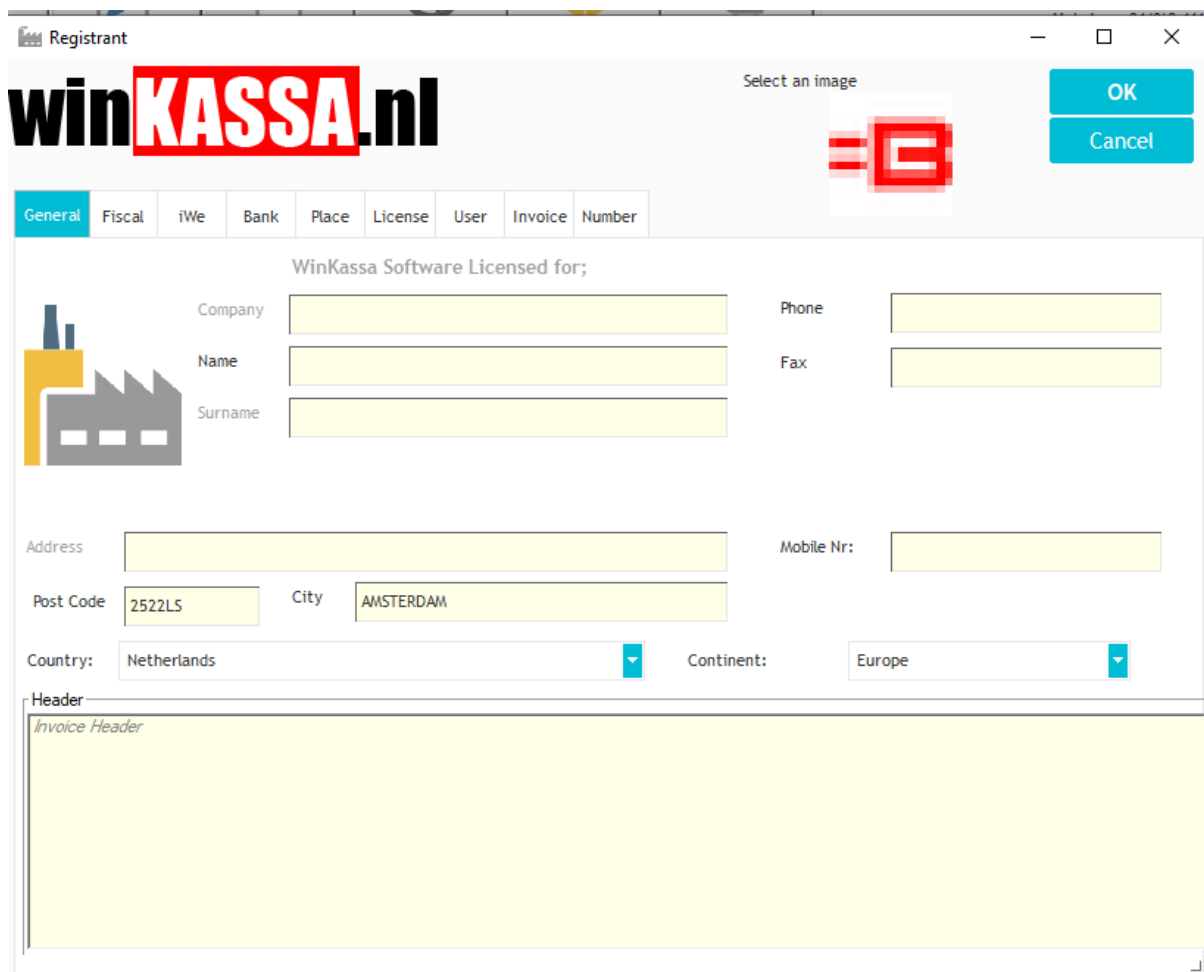
[Geef tekst op]

Feedback

verkoop@proKassa.nl

4. Company Registration Details

Before entering your own products, complete the registration details.



The screenshot shows the 'Registrant' window of the WinKassa software. The window has a title bar with standard Windows controls. The main area features the 'winKASSA.nl' logo on the left and a 'Select an image' button with a red 'E' icon on the right. Below the logo is a tabbed interface with tabs for 'General', 'Fiscal', 'iWe', 'Bank', 'Place', 'License', 'User', 'Invoice', and 'Number'. The 'General' tab is active, displaying a form for company registration. The form includes fields for 'Company', 'Name', 'Surname', 'Phone', 'Fax', 'Address', 'Post Code' (pre-filled with '2522LS'), 'City' (pre-filled with 'AMSTERDAM'), 'Country' (pre-filled with 'Netherlands'), and 'Mobile Nr:'. There are also dropdown menus for 'Continent' (pre-filled with 'Europe'). At the bottom, there is a 'Header' section with a large yellow area for 'Invoice Header'.

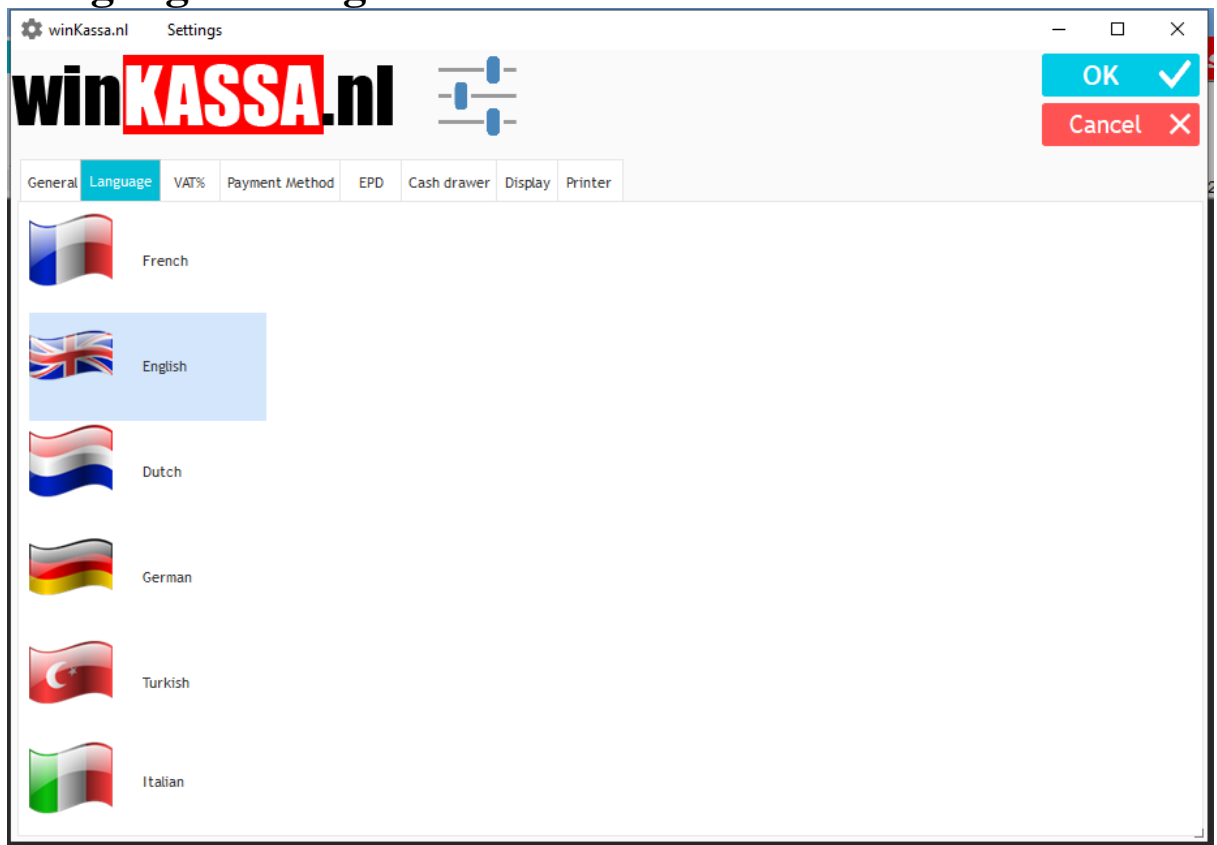
1. Menu **1** – **File**
2. **7** – **User / Registrant**
3. Enter:
 - City
 - Postal Code
 - Country
4. Save using **F5** or **OK**

[Geef tekst op]

Feedback

verkoop@proKassa.nl

5. Language Settings



1. Menu **9 – Extra**
2. **5 – Settings**
3. Open **Language (Tab 2)**
4. Select your preferred language
5. Save with **F5** or **OK**

[Geef tekst op]

Feedback

verkoop@proKassa.nl

6. VAT (Tax) Configuration

- There is **no limit** to the number of VAT rates.

winKASSA.nl Settings

winKASSA.nl

General Language VAT% Payment Method EPD Cash drawer Display Printer

TAX Rate	VAT Label
0	Verpakking
9	Laag /Food
21	Hoog /Non Food

Delete

VAT Percentage

☐ Automatically change sales price

☐ Change group VAT rates automatically

To configure VAT rates:

1. Menu **9 – Extra**
2. **5 – Settings**
3. **VAT (Tab 3)**
4. Enter:
 - VAT percentage in the left column
 - Description in the right column

[Geef tekst op]

Feedback

verkoop@proKassa.nl

5. Save with **F5** or **OK**

7. Receipt / Ticket Settings

The screenshot shows the 'winKASSA.nl Settings' window with the 'Cash drawer' tab selected. The window has a title bar with standard Windows controls and a toolbar with 'OK' and 'Cancel' buttons. Below the toolbar is a tabbed interface with 'General', 'Language', 'VAT%', 'Payment Method', 'EPD', 'Cash drawer', 'Display', and 'Printer'. The 'Cash drawer' tab is active, showing a 'Cash Drawer Configuration' section. This section includes a checkbox for 'Cash and Save button (Not Open Cash Drawer)', an 'Opening Amount of Cash Register' field, and a 'Type Port' dropdown set to 'COM'. Below this are 'Port number' (set to 1) and 'Bauds Rate' (set to 19200) fields, each with a corresponding 'Save' or 'Test Port' button. A 'Ticket Header and Footer' section is also visible, containing two columns: 'Ticket Title / Header' and 'Bottom message'. The 'Ticket Title / Header' column has four input fields for 'Name', 'Address', 'Post Code _City', and 'Tel:'. The 'Bottom message' column has four input fields for 'Line 1 Bottom' and 'Line 2 Bottom' (each repeated twice).

winKASSA.nl Settings

General Language VAT% Payment Method EPD **Cash drawer** Display Printer

Cash Drawer Configuration

☐ Cash and Save button (Not Open Cash Drawer)

Opening Amount of Cash Register

Type Port COM Save

Port number 1 Test Port

Bauds Rate 19200

Ticket Header and Footer

Ticket Title / Header		Bottom message	
Name		Line 1 Bottom	
Address		Line 2 Bottom	
Post Code _City		Line 1 Bottom	
Tel:		Line 2 Bottom	

7.1 Receipt Header

1. Menu **9 – Extra**
2. **5 – Settings**
3. **Cash Drawer (Tab 6)**

[Geef tekst op]

Feedback

verkoop@proKassa.nl

Ticket Title / Header

- Store name
- Address
- Postal code and city
- Phone number

Note: Store names longer than **20 characters** may not display correctly
(This limitation is removed in the Pro version.)

Bottom Message

- Return policy
- Social media links
- Custom customer messages

Save using **F5** or **OK**

8. Customer Display Settings

winKASSA.nl Settings

winKASSA.nl

General Language VAT% Payment Method EPD Cash drawer Display Printer

Customer Display Configuration

Display Port Name: COM1 [Test Display Port]

☐ Activate VGADisplay

Customer Display Message Max: 2x20 Chr

Display Message Max: 2x20 Chr

Line 1

Line 2

OK Cancel

Supported displays:

- Serial Display
- VGA Display

[Geef tekst op]

Feedback

verkoop@proKassa.nl

1. Menu **9 – Extra**
2. **5 – Settings**
3. **Display (Tab 7)**

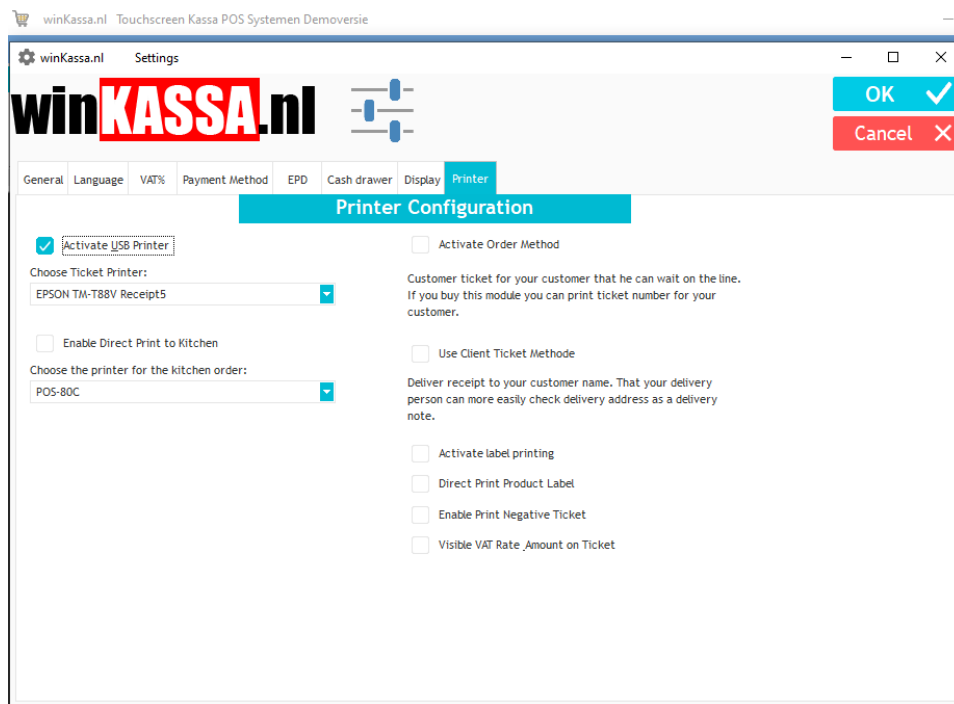
- Select the COM port connected to the customer display
- Maximum **20 characters per line**

Example:

Welcome to
Your Shop Name

Save with **F5** or **OK**

9. USB Printer Configuration



1. Menu **9 – Extra**
2. **5 – Settings**
3. **Printer / Display (Tab 7)**

- Select your USB printer
- Activate using **Activate USB Printer**
- To show VAT rates on receipts, enable:
 - **Visible VAT rate on Ticket**

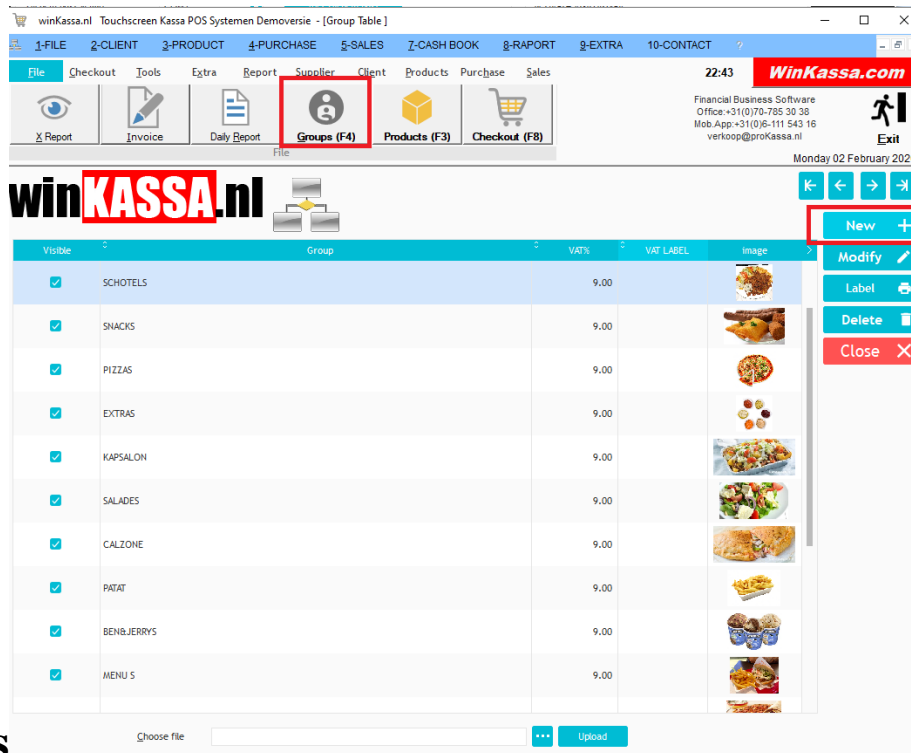
Save changes with **F5** or **OK**

[Geef tekst op]

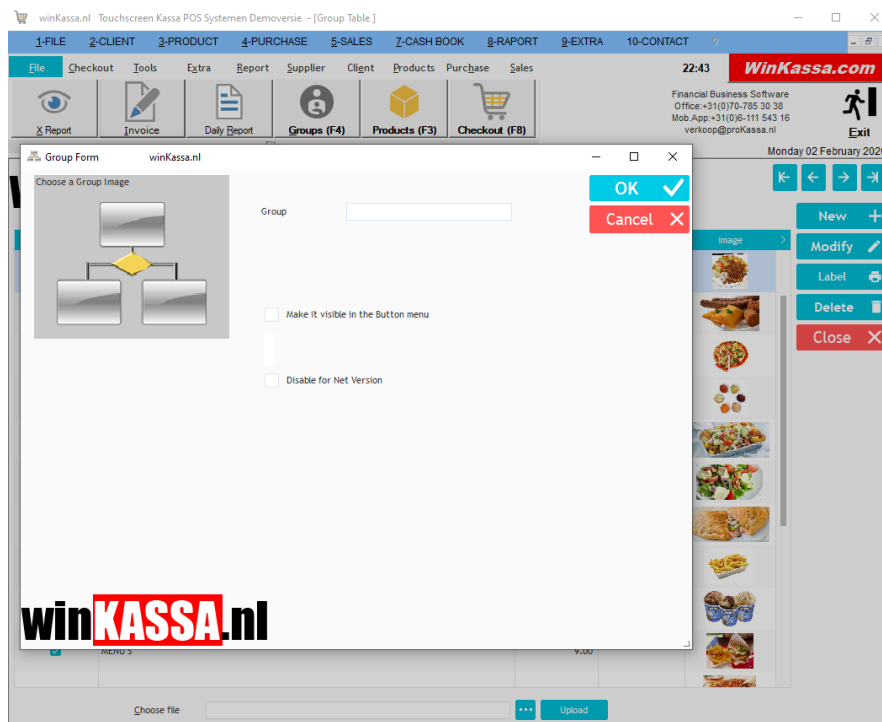
Feedback

verkoop@proKassa.nl

10. Create Product



Groups



1. Click the **Group** button on the main screen
2. Click **New** on the right
3. Enter group details

[Geef tekst op]

Feedback

verkoop@proKassa.nl

For products without barcodes:

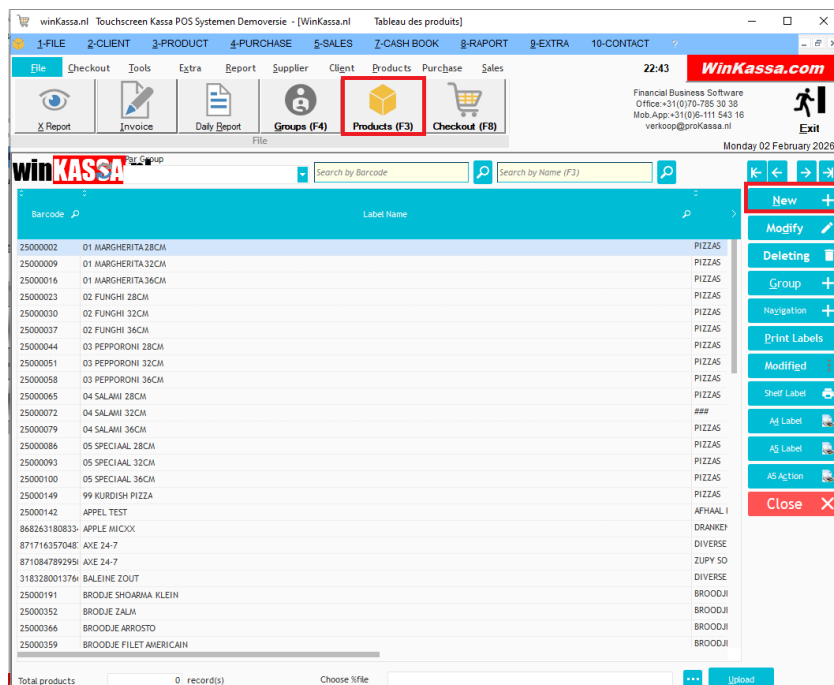
- Enable **Make visible in the button menu**

Add a group image:

- Click **Choose a Group Image**
- Select an image from your computer

Save using **F5** or **OK**

11. Add Products



[Geef tekst op]

Feedback

verkoop@proKassa.nl

1. Click **Product** on the main screen
2. Select **New**

Product details:

- Scan the barcode (appears automatically)
- Enter product name/description
- Select product group
- Press **F8** or click **Sales Price with TAX** to enter VAT-inclusive price

Bulk Import via Excel

- Import **50,000+** products without issues
- Contact support for assistance

12. Sales Screen

- Click the **Checkout** button to open the sales screen

[Geef tekst op]

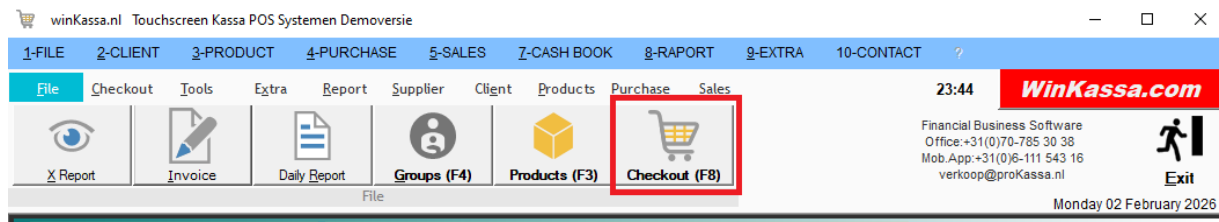
Feedback

verkoop@proKassa.nl

Sales Functions

- Scan barcode: Adds product to the sales list
- Red (–) button: Remove selected product
- **Return:** Process product returns
- **OPEN:** Open cash drawer
- **X Cancel:** Clear sales table
- **Hold On:** Put transaction on hold
- **Last Ticket:** Reprint last receipt
- **Total:** Proceed to payment
- **Quantity Calculator:**
 - Change quantity or price
 - Add manual products not in the system

13. Payment Screen



[Geef tekst op]

Feedback

verkoop@proKassa.nl

WinKassa.nl Shop Management & Sales Software

WinKassa.com

Date: 02/02/2026 Nr: 26000000001 CNR: 1

Barcode: Client: PARTICULIER VERKOOP

Total Paid: 9.00

Payback: 9.00

Amount After Discount: 0.00

TOTAL

Close

BarCode	Caption	Qty	VAT	Price with VAT	AMOUNT
25000198	FANTA	1.000	9	1.50	1.50
90162909	REDBULL	1.000	9	2.00	2.00
25000184	BROODJE KIP KLEIN	1.000	9	3.00	3.00
25000352	BROODJE ZALM	1.000	9	4.00	4.00
5449000131	COCA COLA	-1.000	9	1.50	-1.50

Print X **Report Z** **Table Menu** **Hold on** **Last Ticket** **Cash Print**

Retour **Div. Quantity** **Open** **Cancel**

BROODJE SHOARMA **BROODJE ZALM** **BROODJE ARROSTO** **BROODJE FILET**

BROODJE KIP KLEIN **GEMALEN GEMBER**

AFHAAL PRIJZEN **BENJERRY'S** **BROODJES** **CALZONE** **DRANKEN**

EXTRAS **KAPSALON** **MENU'S** **OTHER** **PATAT**

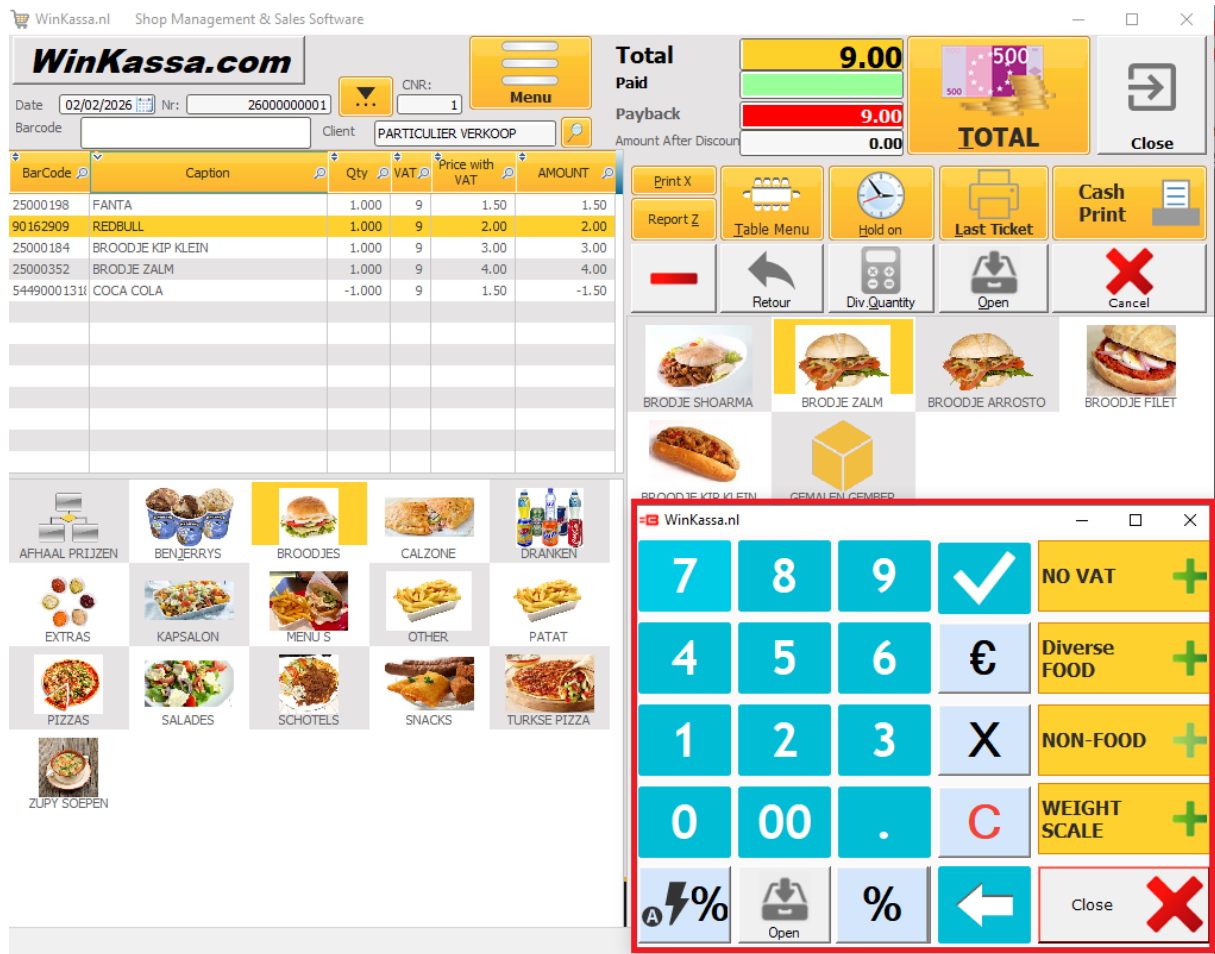
PIZZAS **SALADES** **SCHOTELS** **SNACKS** **TURKSE PIZZA**

ZUPPY SOEPEN

[Geef tekst op]

Feedback

verkoop@proKassa.nl



- Select **Cash** or **POS/Card**
- Change is calculated automatically
- For mixed payments:
 - Enter cash amount first
 - Then select POS payment
- **CE** clears the current entry

Cash Button

- Use only if the customer pays the **exact amount**

After Payment

- **Print:** Print receipt
- **Save:** Save receipt
- **Cancel:** Return to sales screen

Example:

If the total is €5.20 and the customer gives €10.20:

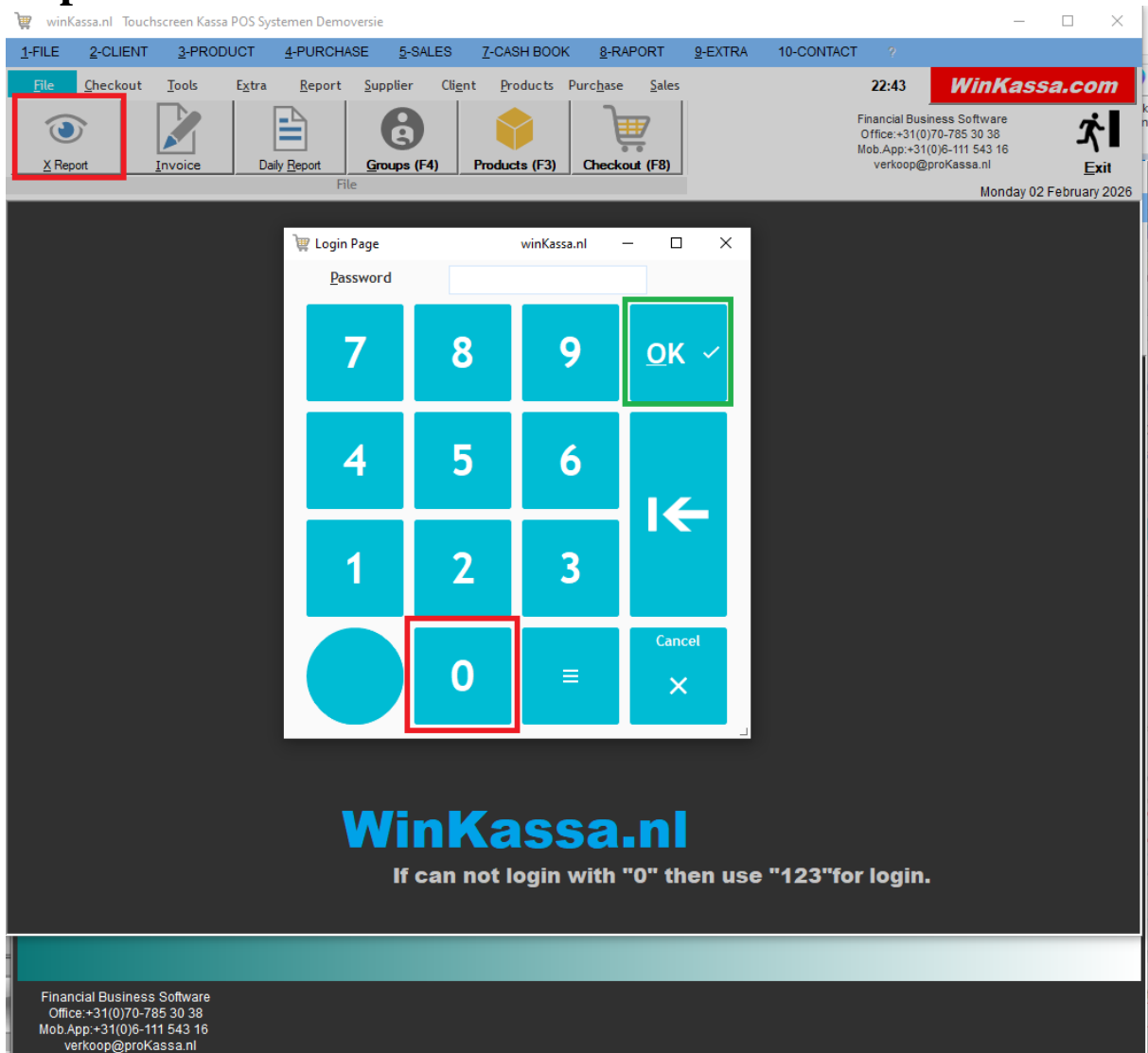
- Enter **0.20** first
- Change returned will be **€5.00**

[Geef tekst op]

Feedback

verkoop@proKassa.nl

14. Reports



X Report (Sales Summary)

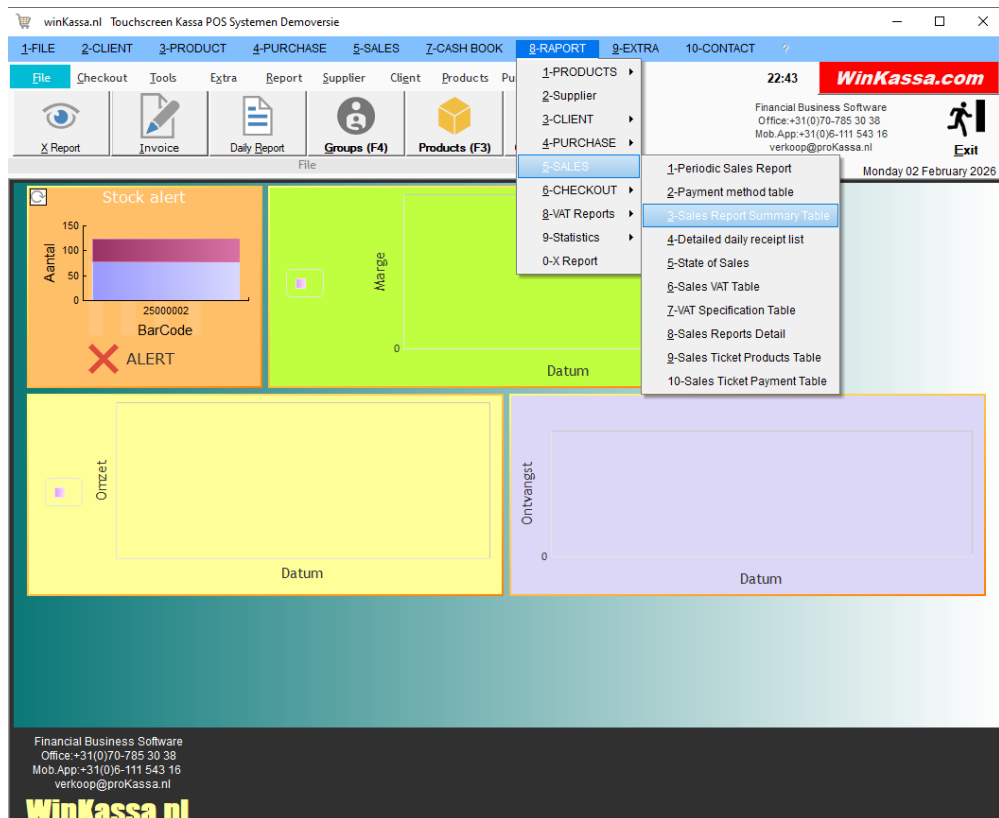
- Login code: 0 or 123

Menu path:

[Geef tekst op]

Feedback

verkoop@proKassa.nl



winKassa.nl Touchscreen Kassa POS Systemen Demo

1-FILE

2-CLIENT

3-PRODUCT

4-PURCHASE

5-SALES

7-CASH BOOK

8-RAPORT

9-EXTRA

10-CONTACT

?

File

Checkout

Tools

Extra

Report

Supplier

Client

Products

Purchase

Sales

22:43

WinKassa.com

Financial Business Software

Office +31(0)70-785 30 38

Mob.App +31(0)6-111 543 16

verkoop@proKassa.nl

Exit

File

Monday 02 February 2026

WinKassa.nl Sales Report Summary Table

Start date: 01/01/2026 Thursday

End date: 02/02/2026 Monday

Preset period

Apply

Print

Print

Close

Sales Report Summary Table

Today

Yesterday

Current week

Floating week

Previous week

Current month

Floating month

Previous month

Current year

Floating year

Previous year

Date

TTLExcVAT

TTLVAT

NoVAT

VAT9ExcVAT

VAT9VAT

VAT9TTL

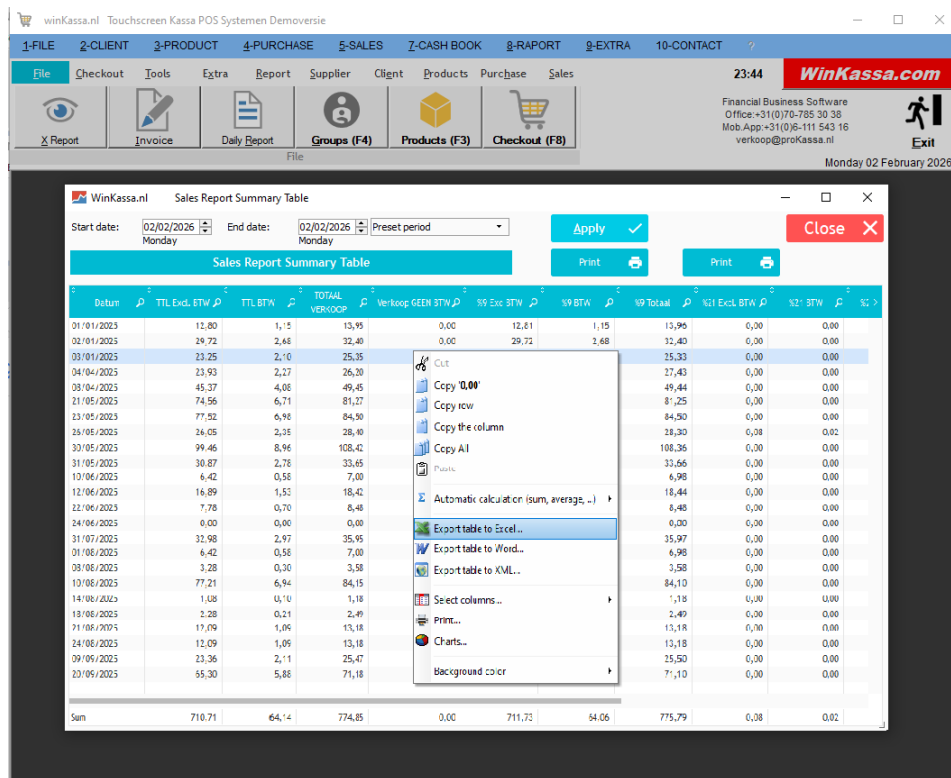
VAT21NoVAT

Sum

[Geef tekst op]

Feedback

verkoop@proKassa.nl



- 8 – Overview
- 5 – Sales
- 3 – Sales Report Summary

Features:

- Monthly or quarterly accounting reports
- Right-click to export to **Excel**

15. Suggestions and Advanced Versions

For suggestions or feedback, please contact us.

For large stores, multiple checkout points, and unlimited scalability:

- **WinKassa.nl**
- **WinRetail.nl**

Key features:

- European scale integration (10 brands)
- Cash drawer support
- Digital price labels
- Powerful, unlimited POS software

[Geef tekst op]

Feedback

verkoop@proKassa.nl

Free, reusable POS cash register software..

proKassa.nl

verkoop@prokassa.nl or visit <https://prokassa.nl/>

[Geef tekst op]

Feedback

verkoop@proKassa.nl